

AUTOWBAR®

THE COMPLETE TOWBAR SYSTEM

INTRODUCING AUTOWBAR

An advanced towbar system that promises to revolutionise trailer towing for light and medium truck operators.

Autowbar delivers maximum towing versatility via heavy duty removable coupling mounts to make rapid switching of several popular coupling types a reality:

Switch between,

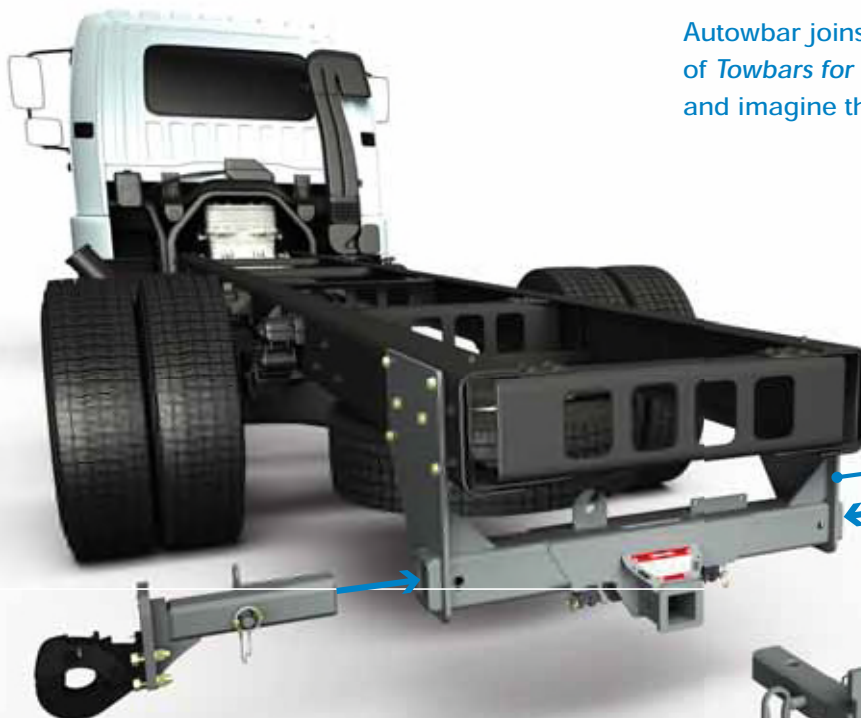
- Bartlett 95mm Ball
- 70mm Ball
- 50mm Ball
- Pintle hooks, and others

Designed and produced in Australia, the Autowbar mount system relies on precision machined solid square billets designed to exactly fit jig assembled, laser cut receiver assemblies.

Autowbar towbars are made by truck people for heavy duty truck and trailer work.

AUTOWBAR - ELIMINATE COMPROMISE

Autowbar joins the popular Bartlett range of Towbars for Trucks. Examine the details and imagine the possibilities...



Multi-Fit

Sideplate system allows for height and width adjustment during installation.

Mount Stowage

Stow spare mounts in sockets provided each end of crossmember.

Mount - Pintle Hook

Accessory - Mount and hook not included in towbar kit.

Mount - 50mm Ball

Mount - Bartlett 95mm Ball

Accessory - Mount and ball not included in towbar kit. Also suits some 70mm balls.

Patent Application Registered

AUTOWBAR® CONNECT WITH ANY TRAILER

Autowbar provides vehicle operators with the ability to tow virtually any trailer* regardless of the trailer coupling type.

Local Government fleets, utilities, emergency services and private operators will connect directly with hire trailers, contractors and newly acquired assets with ease.

Customisation: Operators with special vehicle configurations are encouraged to provide Bartlett with details so that a custom towing solution can be assessed.

*Trailer air and/or electrical services may not be compatible. Trailer couplings must be ADR 62 compliant. Some less common imported trailer coupling types and sizes will not be compatible with the Autowbar system.

Two models are available:

BT620

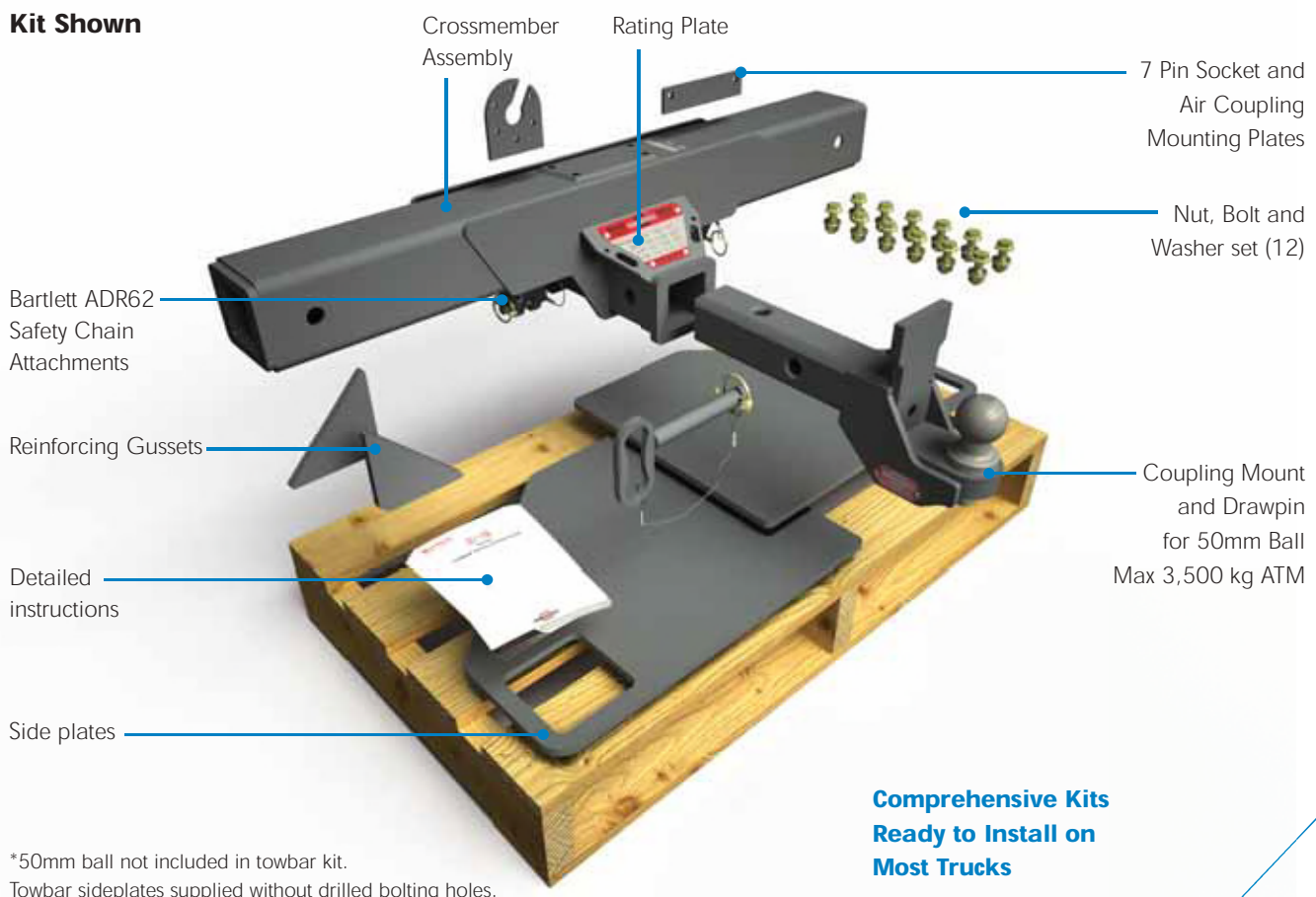
- Suits light to medium truck/trailer applications
- Maximum rating - 4,500kg ATM
- 62mm machined solid square steel coupling mounts for strength and durability

BT750

- Suits medium truck/trailer applications
- Maximum rating - 7,000kg
- 75mm solid square machined steel coupling mounts for the ultimate in heavy duty towing versatility

AUTOWBAR - KIT PRESENTATION

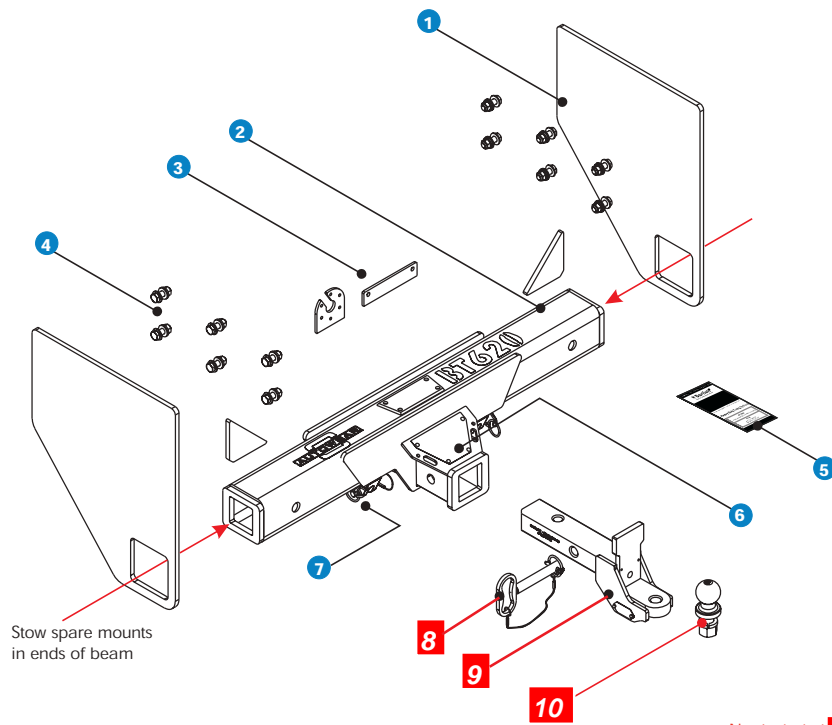
Model BT620 Kit Shown



BT620 TOWBAR SYSTEM

MULTI-COUPLING CONVERTER Max. 4,500kg ATM

ASSEMBLY DIAGRAM



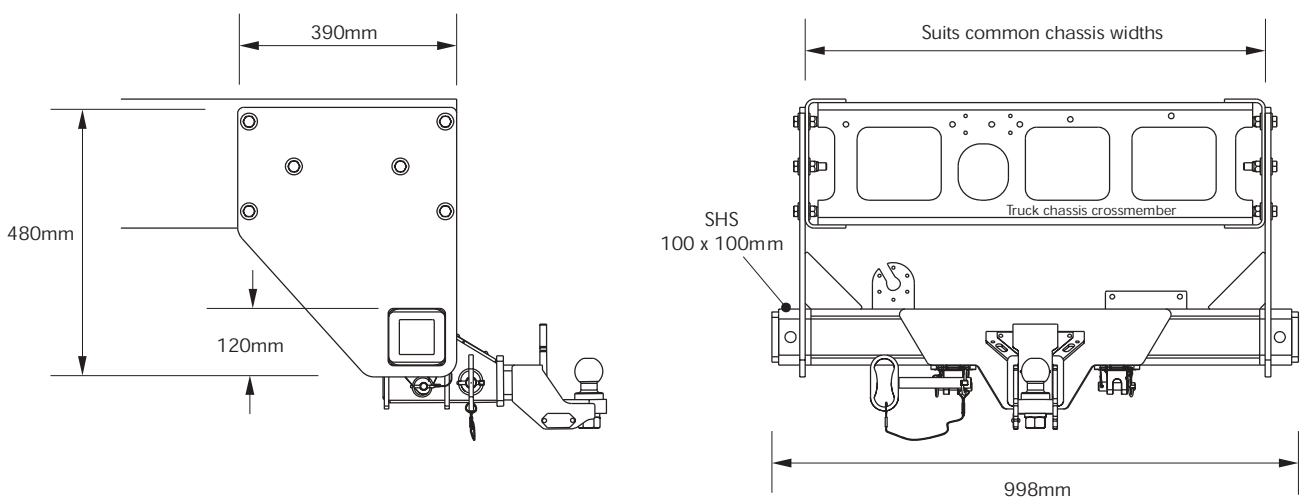
ITEM	DESCRIPTION
1	Side Plates and Gussets
2	Crossmember Assembly (inc. item 5)
3	7 Pin Base and Air Coupling Mount Plates
4	Sideplate bolt set
5	Detailed instruction booklet
6	Rating plate
7	Bartlett ADR62 Safety Chain Attachments
8	BTU-0303 Draw Pin Assembly
9	BT620-50M Coupling Mount Suits 50mm Ball Max. 3,500kg ATM

Items not included in kit (separate purchase)

Not included in towbar kit **8,9,10**

50mm Ball (AS4177)

DIMENSIONS



Drawings not to scale. Side plate mounting holes not included. (May be customised).

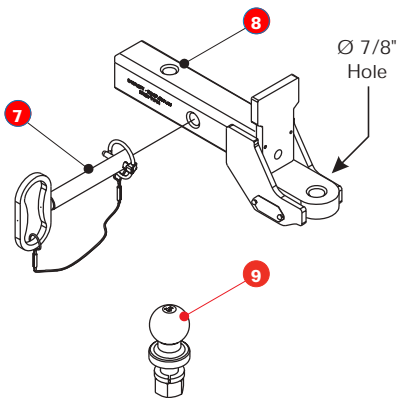
BT620 TOWBAR SYSTEM

COUPLING MOUNT OPTIONS Max. 4,500kg ATM

MOUNT 50mm BALL

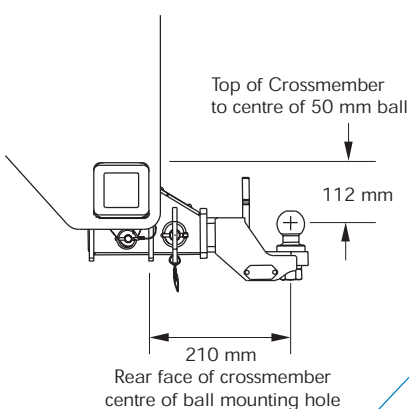
3,500kg ATM

Mount not included in towbar kit



ITEM	DESCRIPTION
7	BTU-0303 Draw Pin Assembly
8	BTU620-50M Coupling Mount (11.4kg)
9	50mm Ball (AS4177) - not included

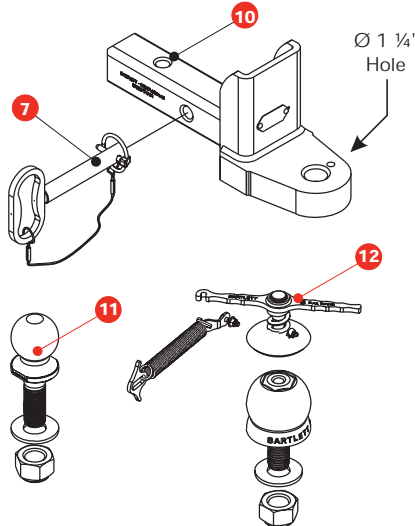
DIMENSIONS



MOUNT 95 OR 70mm BALL

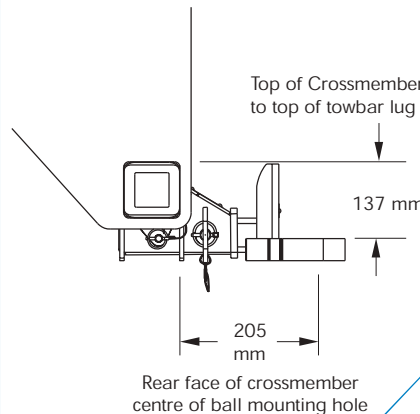
4,500kg ATM

Mount not included in towbar kit - purchase separately



ITEM	DESCRIPTION
7	BTU-0303 Draw Pin Assembly
10	BTU620-95MH Coupling Mount (12.8kg)
11	70mm Ball - not included
12	95mm Bartlett Ball - not included

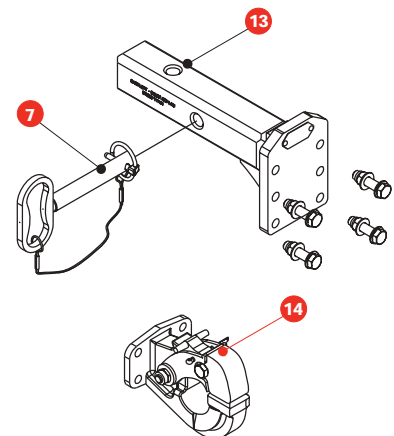
DIMENSIONS



MOUNT PINTLE HOOKS

4,500kg ATM

Mount not included in towbar kit - purchase separately



ITEM	DESCRIPTION
7	BTU-0303 Draw Pin Assembly
13	BTU620-PHM Coupling Mount (11.5kg)
14	Pintle Hook - not included

DIMENSIONS

