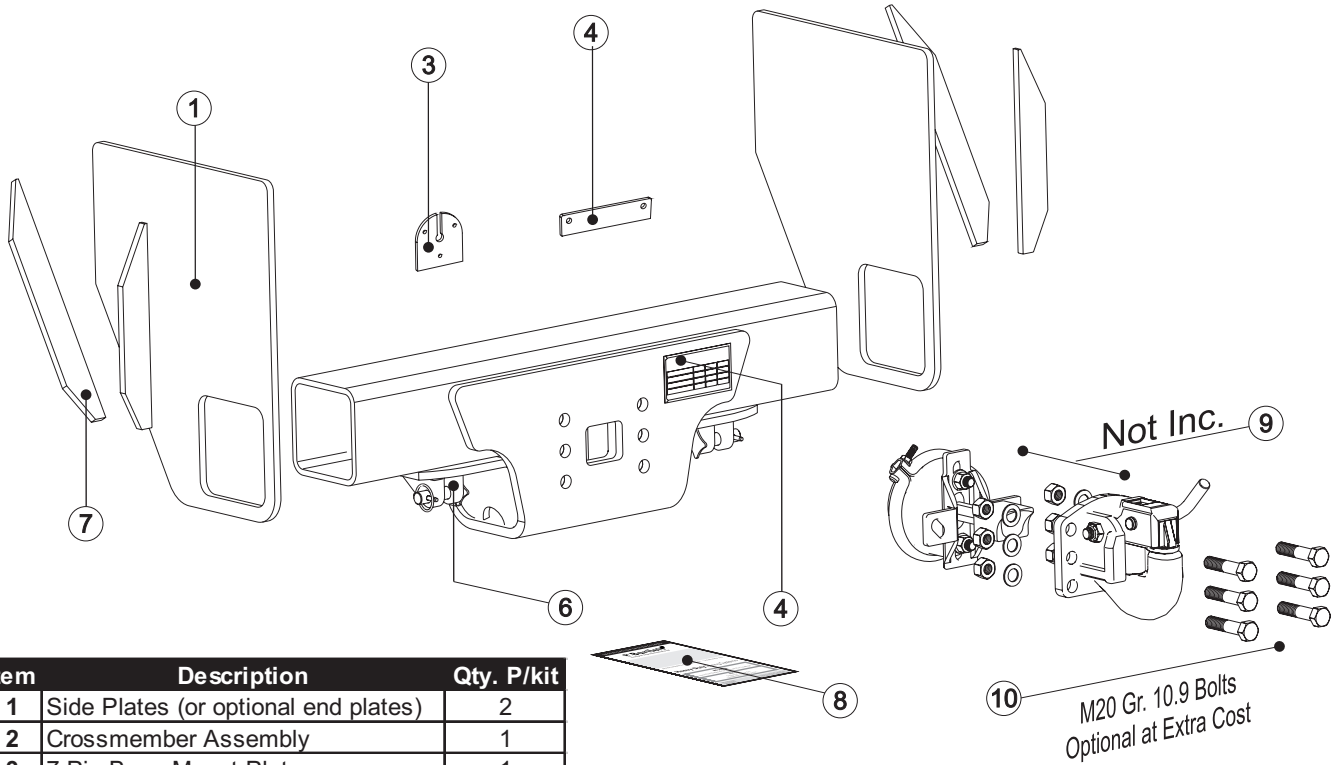


BT1400H

Suits PH300 & *R45 Pintle Hook Couplings
Standard 21 500 kg - Upgradeable to 30 000 kg

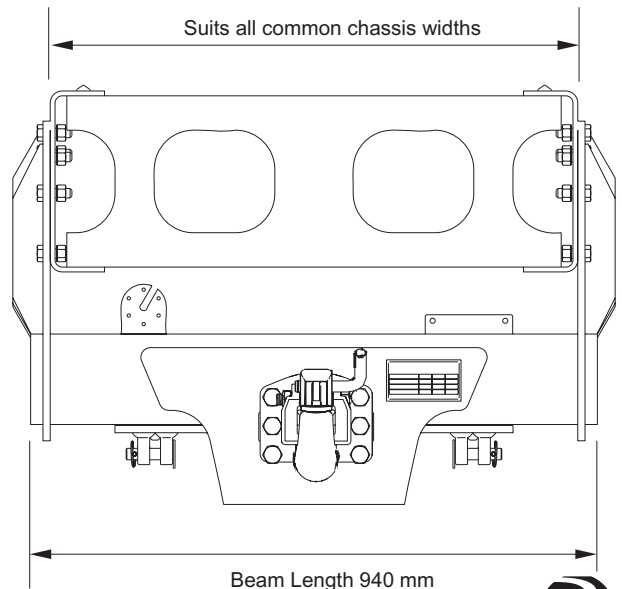
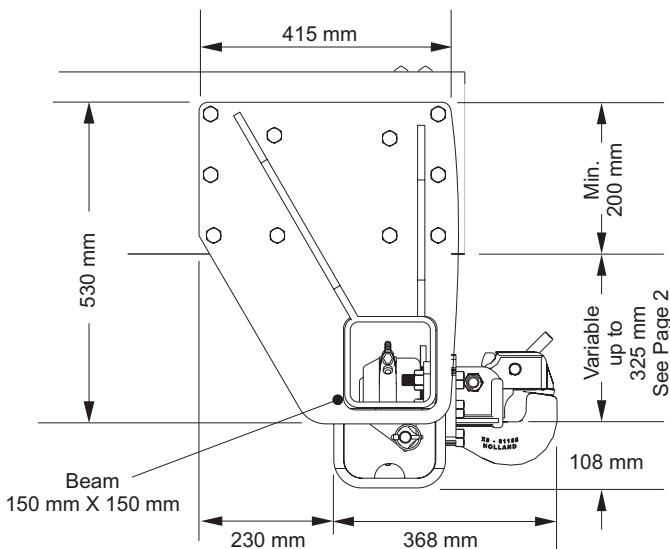


Item	Description	Qty. P/kit
1	Side Plates (or optional end plates)	2
2	Crossmember Assembly	1
3	7 Pin Base Mount Plate	1
4	Air Coupling Mount Plate	1
5	Rating Plate & Studs	1 Set
6	16 mm Safety Chain Attachments	2
7	Sideplate Lateral Braces	4
8	Detailed Instruction Booklet	1
9	Heavy Duty Pintle Hook	Not Inc.
10	Mounting Bolts for Pintle Hook	Opt. Extra

Ratings:

Standard 21 500kg A.T.M
 Upgradeable to maximum ATM's

Shipping Mass Inc. Pallet = 110 Kg.

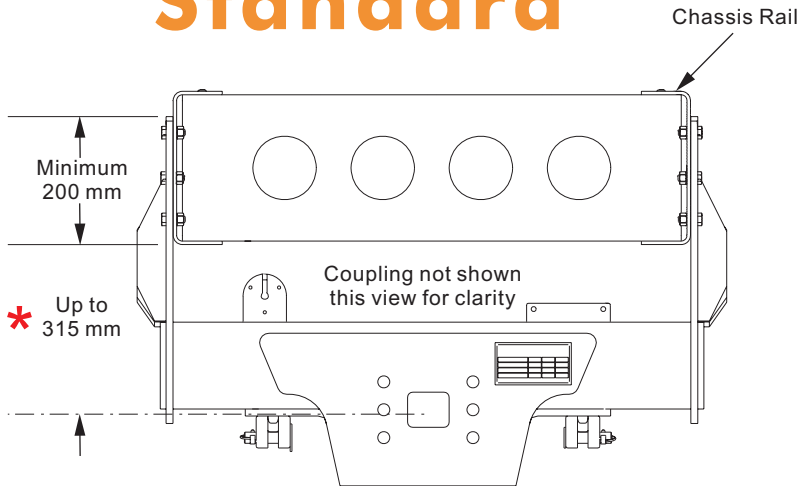


* Holland Hitch® PH300 Pintle hook shown - not included.
 * Also suits Wallace Forge R45 with straight 6 bolt pattern
 * Coupling, sideplate mounting holes and bolts not included - Shown for illustration only
 **BTI reserves the right to alter specifications without notice.

BT1400H

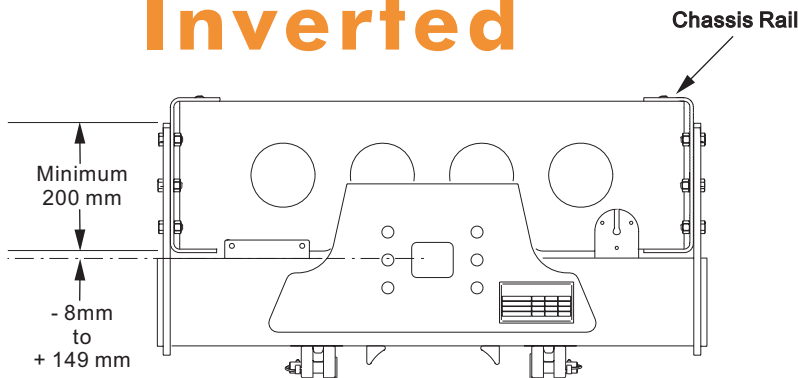
Versatile Mounting Orientations
Achieve a wide range of coupling heights with ease.

Standard



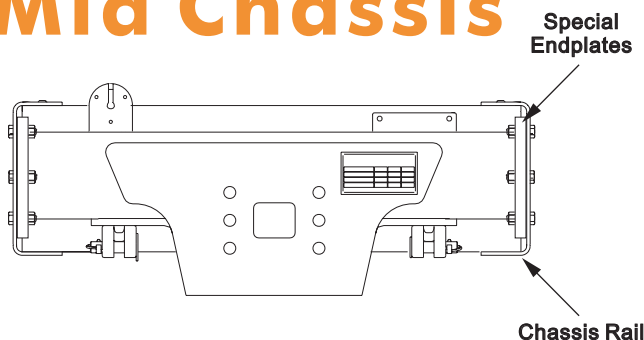
The Standard mounting orientation for the Bartlett BT1400H towbar is slung under the chassis through sideplates externally bolted. This is ideal for vehicles with sufficient rear overhang such as tautliners, tray bodies and some tippers. See the Bartlett BT1700A towbar where rear axle or suspension components may foul the BT1400A crossmember.

Inverted



Invert the Bartlett BT1400H towbar to achieve the highest possible centre of coupling height using the standard (shortened) sideplates. **Special Build** - This option needs to be specified so that the safety chain attachment positions and rating plate hole positions can be adjusted from standard.

Mid Chassis



Mount the BT1400H cross member between the inside webs of the chassis rails for high trailer drawbars. **Special Build** - This option needs to be specified when ordering.

*** Customisation of Sideplate
Shape is Possible**